



NTOMBI PENDANT LIGHT

The name "Ntombi," translates to "Girl" in the Zulu language and is a homage to the Zulu woman's iconic pleated skirt, known as "isidwaba". This pendant light forms part of the 2023 Nokukhanya Collection, Inspired by its meaning "Mother of Light".

Crafted from powder-coated steel and natural ash. The Ntombi serves as a timeless bridge between tradition and modernity, celebrating womanhood and the enduring beauty of Zulu heritage.

Ntombi

noun

Nto-mpi

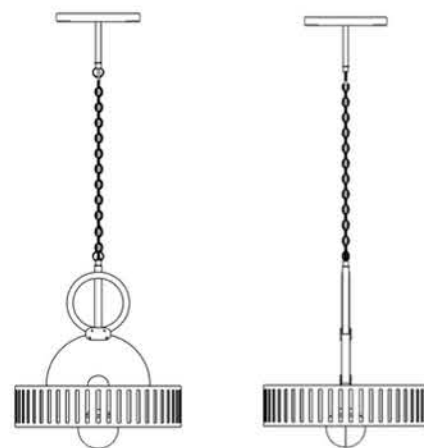
NTOMBI PENDANT LIGHT

DIMENSIONS
400 MM X 400 MM X 1000 MM

WEIGHT:
APPROX 5 KG

SKU:
PDL06-400

PRICE INCL. VAT
RETAIL PRICE: R5 500.00
NANDOS PRICE: R4 675.00



European Ash
Natural Finish
20 mm

custom colours available on request.

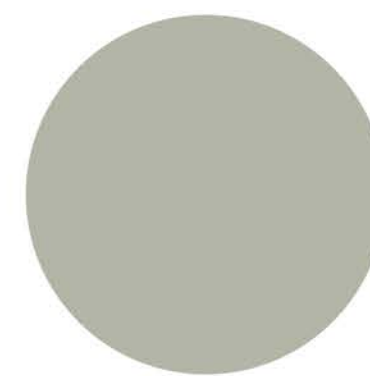
Standard colours



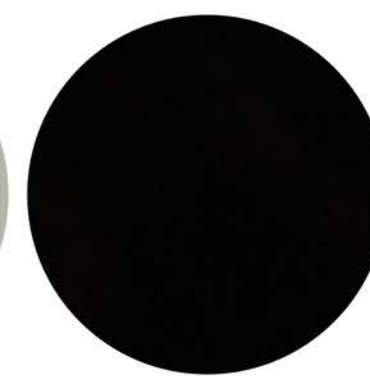
Olive (RAL 6003)
Ferrograin - Outdoor



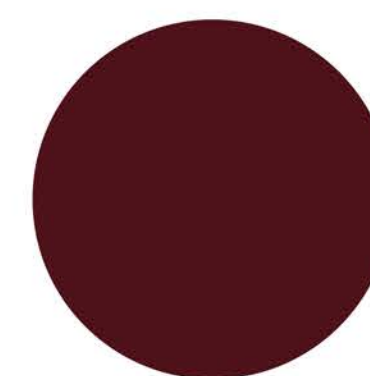
Sienna (RAL 8004)
Ferrograin - Indoor



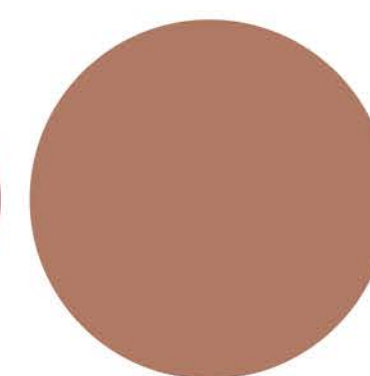
Linen (RAL 7032)
Ferrograin - Indoor



Obsidian (RAL 9011)
Ferrograin - Indoor



Garnet (RAL 3005)
Ferrograin - Indoor



Coral Clay (RAL 3012)
Ferrograin - Indoor

