



NOMALANGA PENDANT LIGHT

An addition to the 2023 Nokukhanya Collection, Nomalanga derives its name from the Zulu language, signifying "sunny."

This pendant light celebrates Zulu culture by drawing inspiration from the iconic headpiece, "isicholo," traditionally worn by Zulu women.

Crafted from powder-coated steel and timber, it transforms into a contemporary statement piece, merging tradition with modernity. The Nomalanga Pendant Light embodies the radiant spirit of Zulu culture, casting a warm and inviting glow, much like the sun it's named after.

Nomalanga

noun

Noma-lang-a

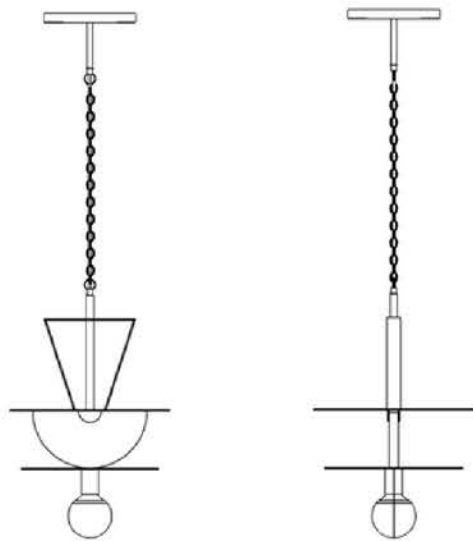
NOMALANGA PENDANT LIGHT

DIMENSIONS
350 MM X 350 MM X 1000 MM

WEIGHT:
5 KG

SKU:
PDL04-350

PRICE INCL VAT:
RETAIL PRICE: R5 000.00
NANDOS PRICE: R4 675.00



European Ash
Natural Finish
20 mm

custom colours available on request.

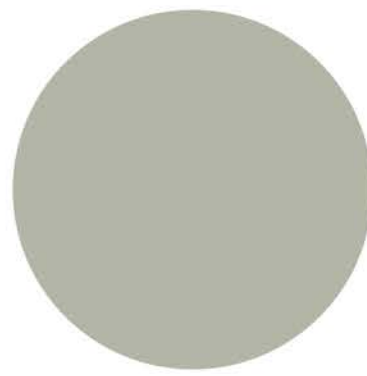
Standard colours



Olive (RAL 6003)
Ferrograin - Outdoor



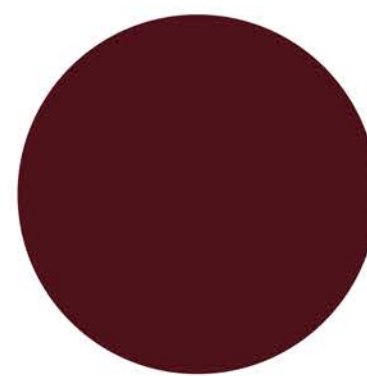
Sienna (RAL 8004)
Ferrograin - Indoor



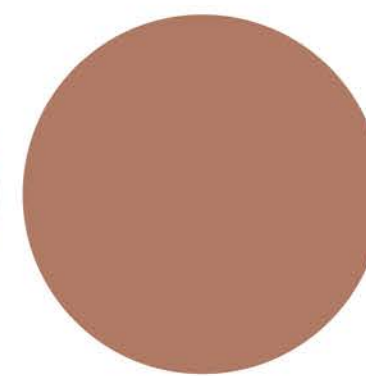
Linen (RAL 7032)
Ferrograin - Indoor



Obsidian (RAL 9011)
Ferrograin - Indoor



Garnet (RAL 3005)
Ferrograin - Indoor



Coral Clay (RAL 3012)
Ferrograin - Indoor

