

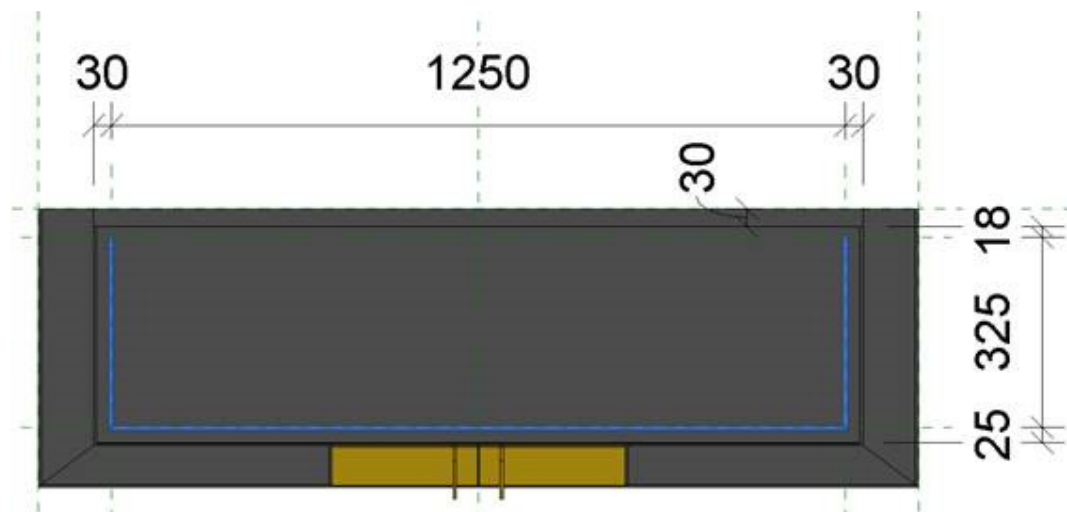
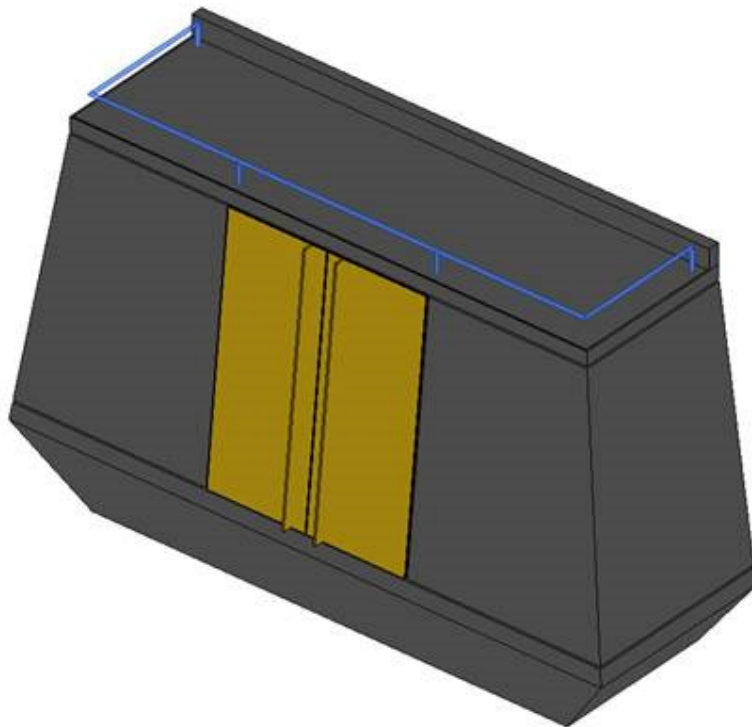
CUSTOM LALA UNIT – WITH BLACK ROD RAIL:

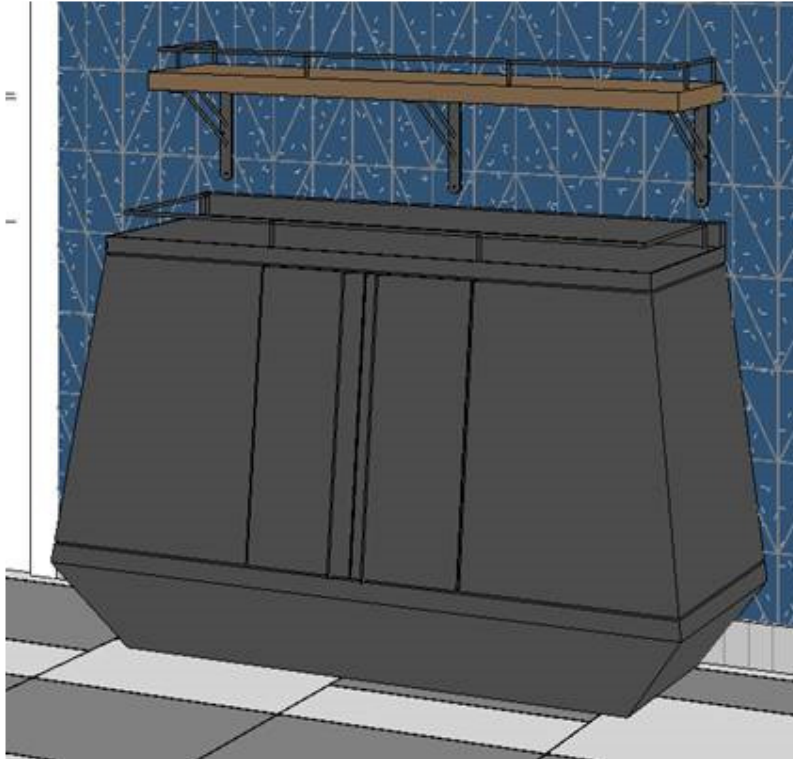
Name: LALA CABINET
QTY: X1

Dimensions: 1500 L x **600 W** x 900mm H

Powder coat finish: Graphite Black [Fine Texture]

Shelves with the verticals inside please as per your drawing you shared.





- a. We would like to have both the units the same width from front to back [600mm], **Graphite Black unit** with **Acid Yellow colour block doors** so they look the same as they are located on either side of the main entrance to the restrooms.
- b. **Stone top:**
 - 30mm thick Rustenburg Granite top;
 - Honed finish;
 - 50mm high splashback along the back only [to provide the 50mm high splashback as a loose item to be installed by the main contractor];
- c. **8mm dia. mild steel rod rail** with 4 vertical pins; 50mm finished height; pins to be recessed within the granite counter top;
To be fixed securely; fixing method to be confirmed with designer;
This is the condiment unit and Nando's UK wants us to install this rail to prevent sauce bottles etc from falling off the unit;
Powder coat finish: Graphite Black;
- d. Please note the floating shelf above unit against wall is part of the shopfitters' scope of works.

Please feel free to contact me to discuss if you need any more information.